

MOUNTING REQUIREMENTS:

In all cases, the meter base is to be mounted so that the meter height above ground deck or porch, etc., is between 5' & 6' from the center of the meter.

On underground installations, the district's conductor will enter the panel from the bottom, on the left. Install the meter base so that the conduits entering and leaving the panel do not cross each other (see fig. 2-1).

See figure 1-1 for a typical overhead service mounted to a meter pole. Overhead service may also terminate to a meter base installed on a building. Overhead service will only be allowed when trenching is not feasible.

GROUNDING:

The customer or electrical contractor is responsible for grounding the meter base. Ground with a #6 copper conductor and two 8' ground rods a minimum of 6' apart.

ELECTRICAL INSPECTION REQUIREMENTS:

All new and altered services must be inspected by the State Electrical Inspector. The district will not energize the service until notice is received that the service has been inspected and approved by the electrical inspector.

Please contact Washington State L&I, with any question regarding the electrical code. You can download an inspection form or request inspection through the L&I website.

Department of Labor and Industries

901 N. Monroe St., Suite. 100

Spokane, WA 99201-2149

web site: lni.wa.gov

email: spokane@lni.wa.gov

(509) 324-2600

REGARDLESS OF THE INFORMATION AND ILLUSTRATIONS CONTAINED IN THIS PAMPHLET, ALL METER BASE INSTALLATIONS ARE SUBJECT TO THE WASHINGTON STATE DEPT. OF LABOR AND INDUSTRIES SPECIFICATIONS.

METER BASE REQUIREMENTS FOR 120/240 VOLT SINGLE PHASE HOME SERVICE:

An approved meter base is to be used. In many cases it is an advantage to install your meter base away from the home in an easy to access, central location. This design provides for multiple services to out buildings, wells or unforeseen future needs.

In this scenario, a meter base with many sub-breaker positions is desirable.

MAST REQUIREMENTS:

For an overhead service drop to a building mounted meter base, you will need to supply a mast and weatherhead. The mast can be constructed from schedule 40 PVC, rigid steel or EMT steel conduits.

Customer-furnished wires must extend at least 18 inches from the weatherhead (see fig. 1-1). The neutral wire should be marked white on each end, mast and meter base.

Contact L&I for mounting, wire size and guying (if needed) requirements.

SPECIAL REQUIREMENTS FOR MOBILE HOMES:

Mobile homes are required to have a main disconnect located within 30 feet of any portion of the home. This is best accomplished by placing your meterbase (with main disconnect) within this required space.

CALL 811 BEFORE YOU DIG:

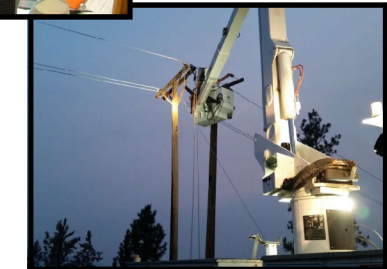
Digging anywhere in the state of Washington without calling for a utility locate is against state law. Failure to call may result in fines, or charges for damages.

QUESTIONS?

Contact the PUD Engineering department.

Ferry Co. PUD
PO Box 1039
509.775.3325

METER BASE REQUIREMENTS



METER BASE FOR OVERHEAD SERVICE

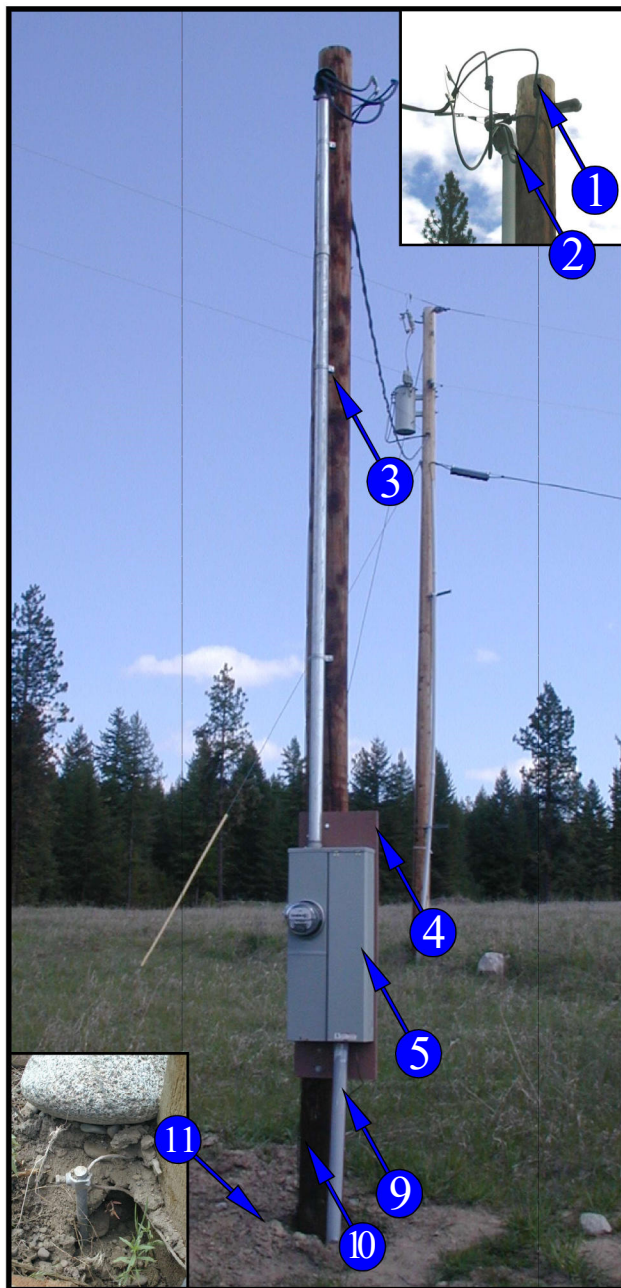


Fig. 1-1

The materials listed below are installed, owned and maintained by the customer.

(PUD owned materials: #8 in Fig. 2-1 and the one ground rod supplied by the PUD with a meter pole #11 Fig 1-1).



YOUR METER BASE IS **NOT** TO BE INSTALLED IN ANY ENCLOSURE, BUILDING, OR ON A TRANSFORMER POLE.

- ① 18" (MINIMUM) WIRE TAILS PAST WEATHERHEAD.
- ② WEATHERHEAD.
- ③ RIGID, EMT STEEL OR SCHEDULE 40 ELECTRICAL PVC WITH CONDUIT STRAPS.
- ④ PAINTED PLYWOOD BACKBOARD.
- ⑤ METER BASE WITH MAIN DISCONNECT.
- ⑥ TREATED METER STUB (POST).
- ⑦ GFI RECEPTACLE.
- ⑧ DISTRICT SECONDARY ENTERING ON THE LEFT IN 3" CONDUIT.
- ⑨ CUSTOMERS SECONDARY - TO HOME OR BUILDING.
- ⑩ #6 COPPER GROUND TO 8' GROUND RODS.
- ⑪ ONE GROUND ROD WITH POLE INSTALLATION SUPPLIED BY PUD. ONE ADDITIONAL GROUND ROD TO BE SUPPLIED BY CUSTOMER.

METER BASE FOR UNDERGROUND SERVICE

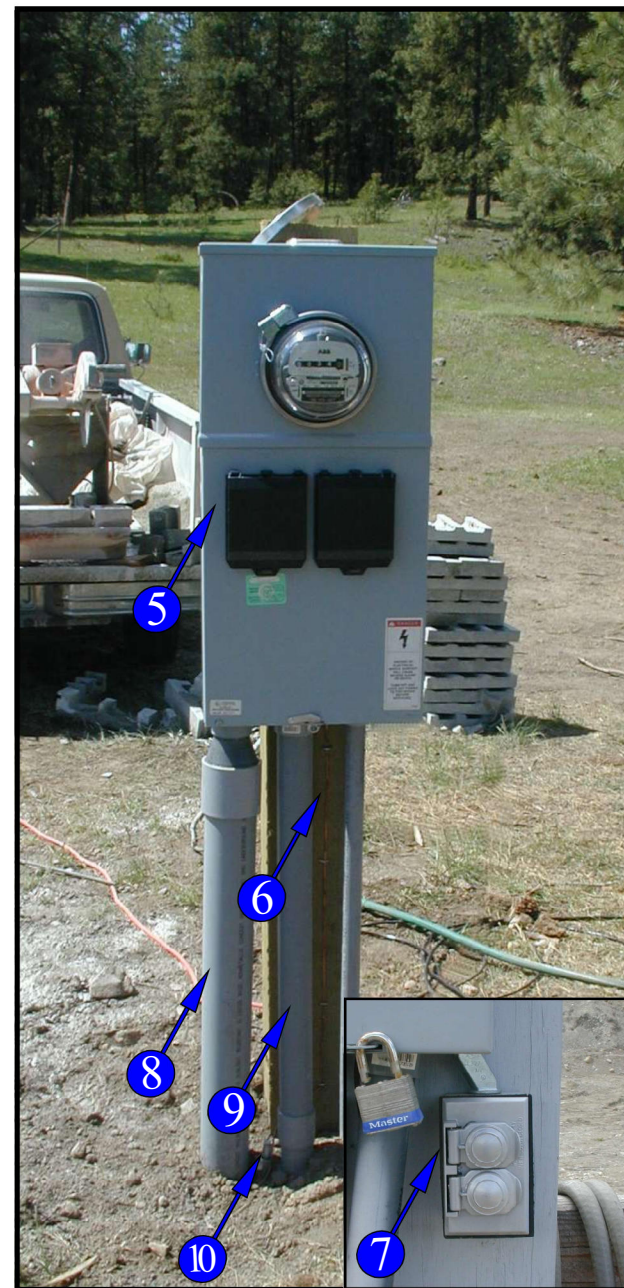


Fig. 2-1